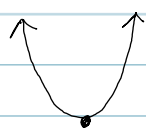


## Chapter 2

### Nonlinear Functions & Models

#### Section 2.1

#### Parabolas (Quadratic Functions)



vertex  $(h, k)$

#### 1. standard form

$$y = a(x - \underline{h})^2 + \underline{k}$$

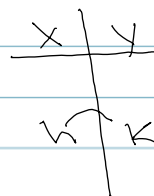
vertex =  $(h, k)$   
"readable"

#### 2. general form

$$y = ax^2 + \underline{bx} + c$$

$$(x) h = \frac{-b}{2a}$$

(y)  $k =$  plug in  $h$



$a$  - sign  
size

$a > 0$  (+) open up  $\rightarrow$  U min

$a < 0$  (-) open down  $\rightarrow$   $\cap$  max